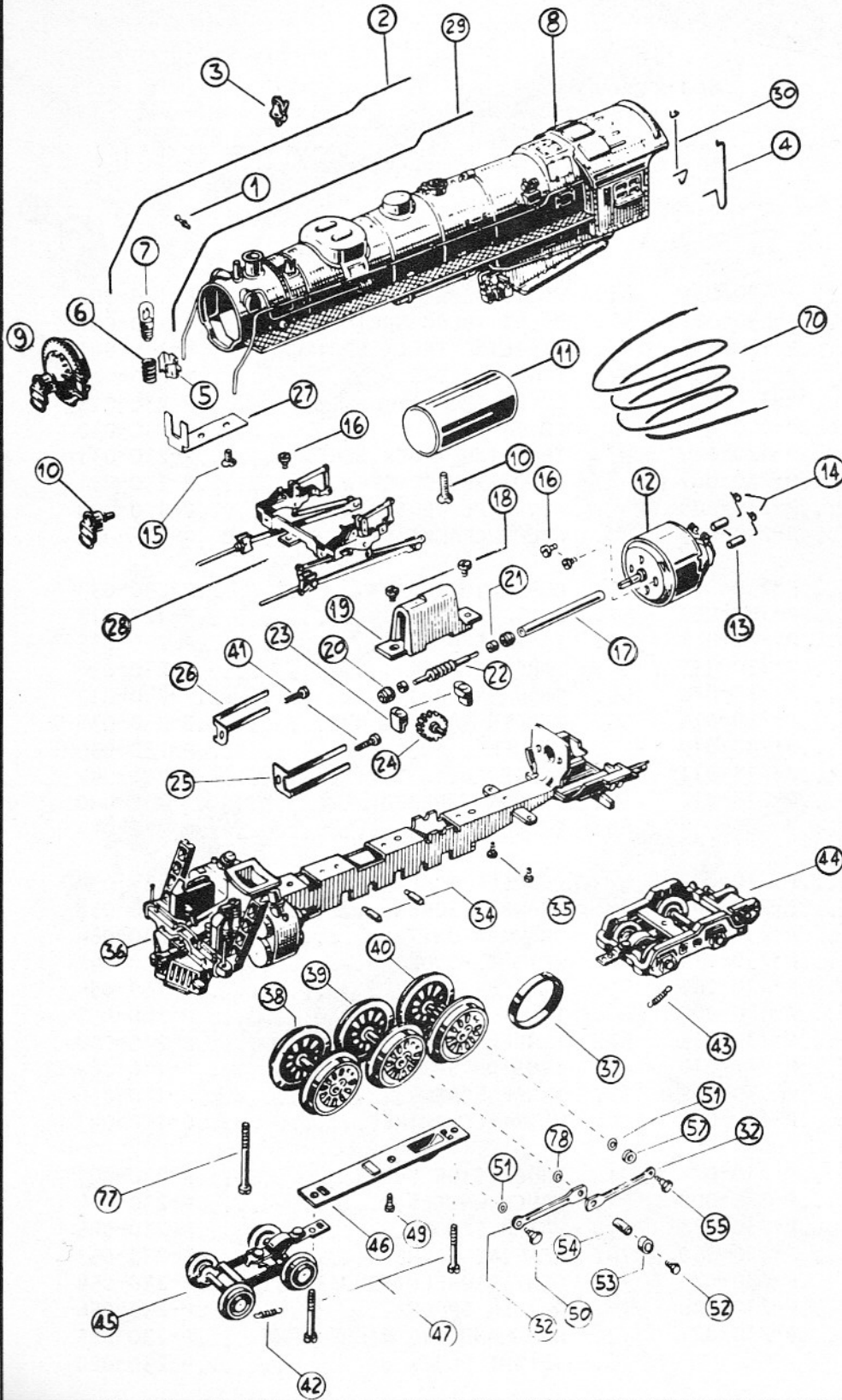
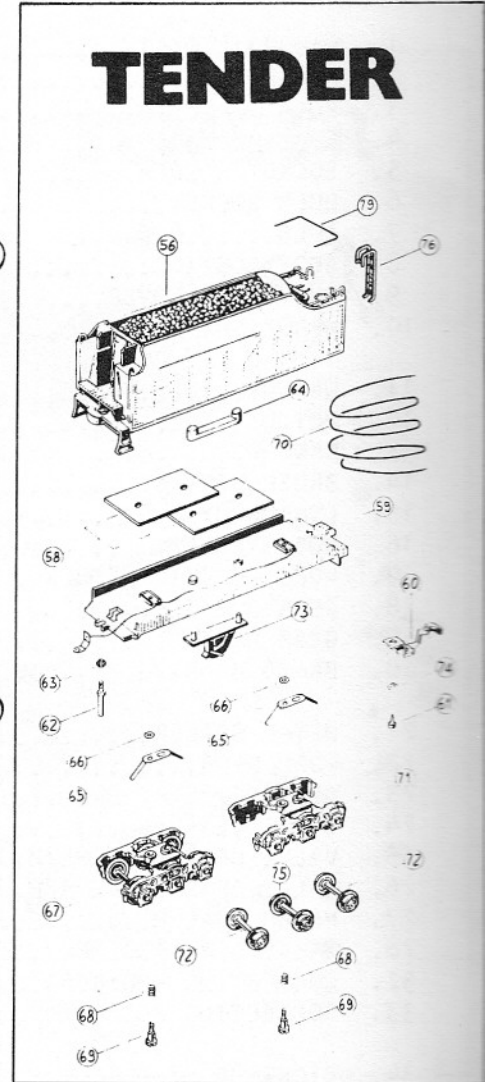


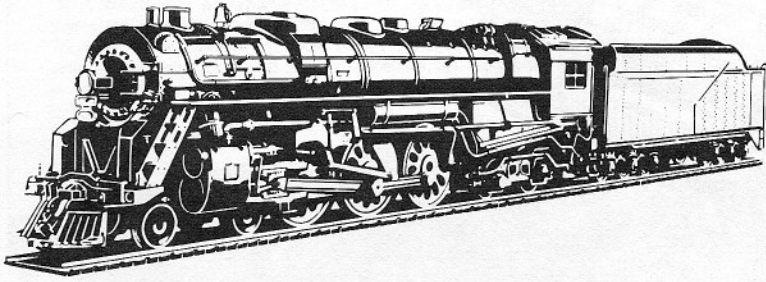
# LATEST REVISION



# TENDER



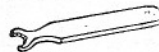
# LATEST REVISION



1. Handrail Post . . . . .	P-120-039	41. Valve Gear Screw . . . . .	P-120-008
2. Handrail R/H . . . . .	P-230-001	42. Pilot Truck Spring . . . . .	P-160-041
3. Bell . . . . .	P-120-037	43. Trailing Truck Spring . . . . .	P-160-041
4. Cab Handrail L/H . . . . .	P-230-051	44. Trailing Truck . . . . .	P-230-028
5. Socket Holder . . . . .	P-235-030	45. Pilot Truck . . . . .	P-230-029
6. Bulb Socket . . . . .	P-120-028	46. Cover Plate . . . . .	P-230-030
7. Bulb . . . . .	P-120-029	47. Truck Screws . . . . .	P-230-031
8. Body Casting . . . . .	P-230-057	49. Cover Plate Screw . . . . .	P-120-008
9. Smoke Box Cover . . . . .	P-230-008	50. Front Crankpin . . . . .	P-126-046
10. Headlight Housing . . . . .	P-230-009	51. Crankpin Washer . . . . .	P-120-010
11. Weight . . . . .	P-231-008	52. Center Crankpin . . . . .	P-122-017
12. Motor . . . . .	P-231-009	53. Small Spacer . . . . .	P-120-019
13. Brushes . . . . .	P-120-032	54. Large Spacer . . . . .	P-120-018
14. Brush Springs . . . . .	P-120-033	55. Rear Crankpin . . . . .	P-120-046
15. Socket Plate Screw . . . . .	P-231-021	56. Tender Casting NYC . . . . .	P-230-038
16. Motor Screw . . . . .	P-120-034	57. Driver Spacer . . . . .	P-126-021
17. Long Plastic Joiner . . . . .	P-230-017	58. Tender Weight . . . . .	P-230-047
18. Gear Box Screw . . . . .	P-230-011	59. Tender Underframe . . . . .	P-230-04C
19. Gear Box . . . . .	P-231-010	60. Coupler . . . . .	P-126-077
20. Brass Bearing . . . . .	P-160-012	61. Coupler Screw . . . . .	P-120-008
21. Metal Spacers . . . . .	P-230-052	62. Drawbar Screw . . . . .	P-210-038
22. Worm Gear . . . . .	P-231-011	63. Drawbar Nut . . . . .	P-210-066
23. Bearing Retainer . . . . .	P-231-012	64. Weight Holder . . . . .	P-230-042
24. Drive Gear . . . . .	P-231-013	65. Pick Up . . . . .	P-160-055
25. Valve Gear Guide L/H . . . . .	P-120-007	66. Truck Washer . . . . .	P-160-053
26. Valve Gear Guide R/H . . . . .	P-120-006	67. Tender Truck . . . . .	P-230-048
27. Socket Holder Plate . . . . .	P-231-014	68. Tension Spring . . . . .	P-126-064
28. Valve Gear Assembly . . . . .	P-230-016	69. Truck Screw . . . . .	P-150-056
29. Handrail L/H . . . . .	P-230-058	70. Ultraflex Wire . . . . .	P-120-043
30. Cab Handrail R/H . . . . .	P-230-055	71. Truck Side Frame . . . . .	P-230-043
32. Connecting Rod . . . . .	P-230-018	72. Truck Wheels . . . . .	P-230-044
34. Pick Up . . . . .	P-230-022	73. Water Scoop . . . . .	P-230-045
35. Frame Screws . . . . .	P-120-008	74. Washer Rear Coupler . . . . .	P-122-042
36. Underframe . . . . .	P-230-060	75. Tender Center Wheels . . . . .	P-230-054
37. Tire . . . . .	P-230-050	76. Ladder . . . . .	P-230-039
38. Front Drivers . . . . .	P-230-025	77. Front Lower Body Screw . . . . .	P-130-021
39. Center Drivers . . . . .	P-230-026	78. Crankpin Washer . . . . .	P-120-015
40. Geared Drivers . . . . .	P-230-061	79. Tender Handrail . . . . .	P-230-059

PRESENTLY WE HAVE TWO SPECIAL TOOLS AVAILABLE TO MAKE YOUR WORK ON OUR LOCOMOTIVES EASIER, IF ANY HAS TO BE DONE. BOTH PIECES ARE FOR REMOVING CRANKPINS FROM WHEELS AND LOOSENING OR TIGHTENING SMALL SCREWS IN THE LOCOMOTIVES THEMSELVES . . .

THEY ARE:



P-120-044  
OPEN END WRENCH



P-120-045  
CLOSED END WRENCH