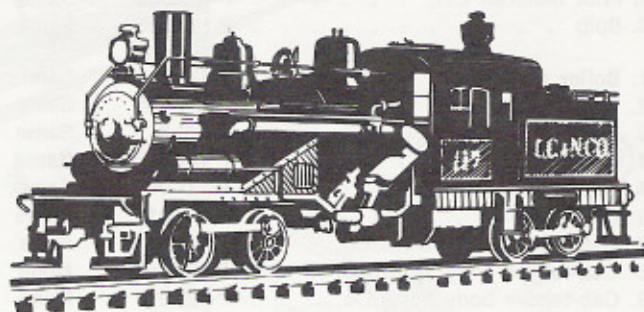
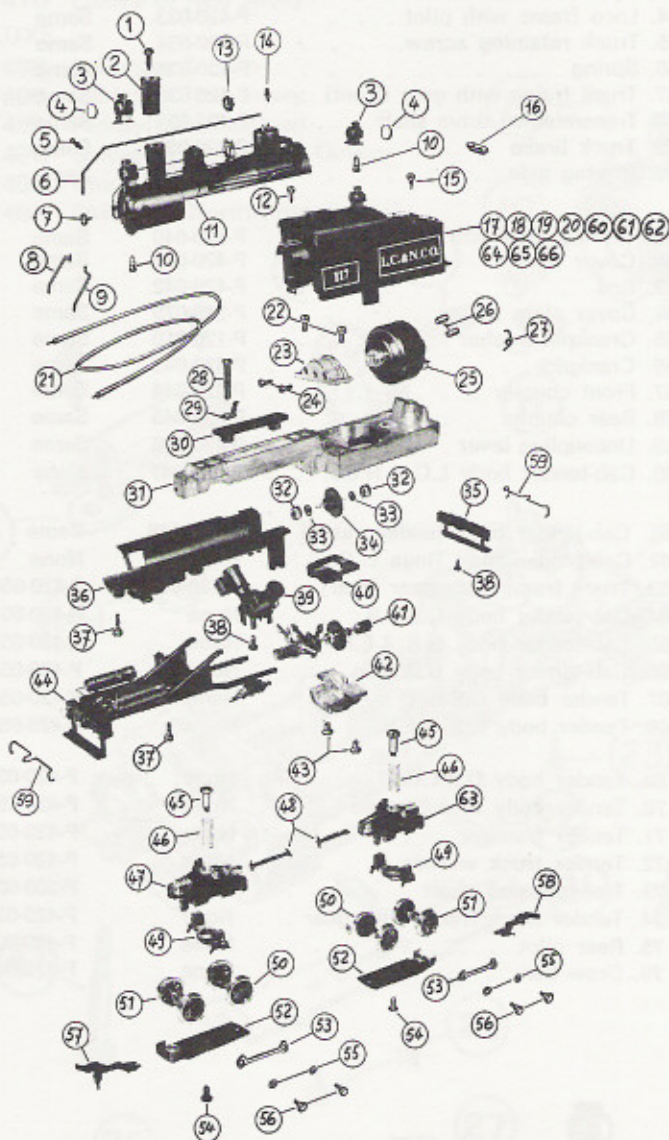


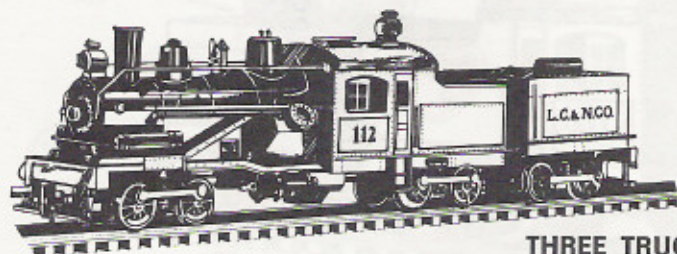
The Heisler was built with two cylinders in V-arrangement, assembled beneath the boiler just ahead of the firebox, giving it a distinctive appearance. The pistons were connected directly to a longitudinal crankshaft. Double universal joints and slip couplings extended from the crank to the outer axles of each truck which were driven through bevel gearing.

The inner axles were driven by ordinary side rods attached to the driven wheels. The Heisler loco can therefore negotiate extreme curvatures and can easily run on high ruling gradients.



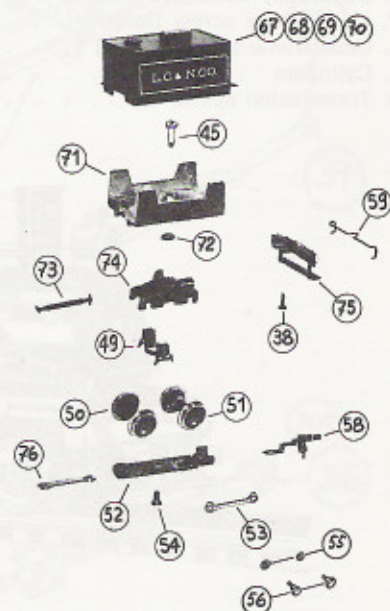
TWO TRUCK

- 5168-02 W. S. L. Co.
- 5168-03 C. B. L. Co.
- 5168-04 D. R. L. Co.
- 5168-05 P. L. Co.
- 5168-06 L. C. & N. Co.
- 5168-07 Undecorated
- 5168-08 T. L. Co.



THREE TRUCK

- 5169-02 C. S. R. R.
- 5169-03 G. B. & E. R.
- 5160-04 D. R. L. Co.
- 5169-05 Undecorated



	5168 (two truck)	5169 (three truck)		5168 (two truck)	5169 (three truck)
1. Upper body bolt	P-420-001	Same	41. Motor shaft (complete assembly) .	P-420-030	Same
2. Smoke stack	P-420-002	Same	42. Gear box bottom	P-420-031	Same
3. Light	P-420-003	Same	43. Gear box bottom screw	P-420-032	Same
4. Head light lens	P-420-004	Same	44. Loco frame with pilot	P-420-033	Same
5. Handrail post	P-420-005	Same	45. Truck retaining screw	P-420-034	Same
6. Handrail	P-420-006	Same	46. Spring	P-420-035	Same
7. Number board	P-420-007	Same	47. Truck frame with gear (front) . .	P-420-036	Same
8. Pilot handrail R.H.	P-420-008	Same	48. Transmission drive shaft	P-420-037	Same
9. Pilot handrail L.H.	P-420-009	Same	49. Truck brake	P-420-038	Same
10. Bulb	P-160-034	Same	50. Driving axle	P-420-039	Same
11. Boiler casting	P-420-010	Same	51. Driving axle with gear	P-420-040	Same
12. Front cab screw	P-120-008	Same	52. Cover plate	P-420-041	Same
13. Bell	P-420-011	Same	53. Rod	P-420-042	Same
14. Steam valve	P-420-012	Same	54. Cover plate screw	P-245-079	Same
15. Rear cab screw	P-121-004	Same	55. Crankpin washer	P-120-010	Same
16. Cover	P-420-013	Same	56. Crankpin	P-420-043	Same
17. Cab-tender body D.R.L.Co.	P-420-014	None	57. Front coupler	P-420-044	Same
18. Cab-tender body C.B.L.Co.	P-420-015	None	58. Rear coupler	P-420-045	Same
19. Cab-tender body Pac.L.Co.	P-420-016	None	59. Uncoupling lever	P-420-046	Same
20. Cab-tender body W.S.L.Co.	P-420-017	None	60. Cab-tender body L.C. & N.Co. . . .	P-420-047	None
21. Ultraflex wire	P-120-043	Same	61. Cab-tender body (undecorated) . .	P-420-048	Same
22. Motor bracket screw	P-420-013	Same	62. Cab-tender body Tioga L. Co. . . .	P-420-049	None
23. Motor bracket	P-420-019	Same	63. Truck frame with gear (rear) . . .	P-420-036	P-420-050
24. Motor retaining screw	P-420-020	Same	64. Cab-tender body C.S.R.R.	None	P-420-051
25. Motor	P-420-021	Same	65. Cab-tender body G.B. & E.R.	None	P-420-052
26. Motor brushes (pair)	P-120-032	Same	66. Cab-tender body D.R.L.Co.	None	P-420-053
27. Motor brush springs	P-120-033	Same	67. Tender body C.S.R.R.	None	P-420-054
28. Contact screw	P-180-021	Same	68. Tender body G.B. & E.R.	None	P-420-055
29. Contact	P-420-022	Same	69. Tender body D.R.L.Co.	None	P-420-056
30. Insulating plate	P-420-023	Same	70. Tender body Undecorated	None	P-420-057
31. Frame	P-420-024	Same	71. Tender frame	None	P-420-058
32. Brass bearing	P-360-012	Same	72. Tender truck washer	None	P-420-059
33. Spacer	P-270-034	Same	73. Transmission shaft	None	P-200-024
34. Double gear with shaft	P-420-025	Same	74. Tender truck frame with gear . . .	None	P-420-036
35. Rear pilot	P-420-026	None	75. Rear pilot	None	P-420-026
36. Underbody casting	P-420-027	Same	76. Draw bar	None	P-420-060
37. Underframe screw (long)	P-255-031	Same			
38. Underframe screw (short)	P-120-008	Same			
39. Cylinders	P-420-028	Same			
40. Transmission spacer	P-420-029	Same			

