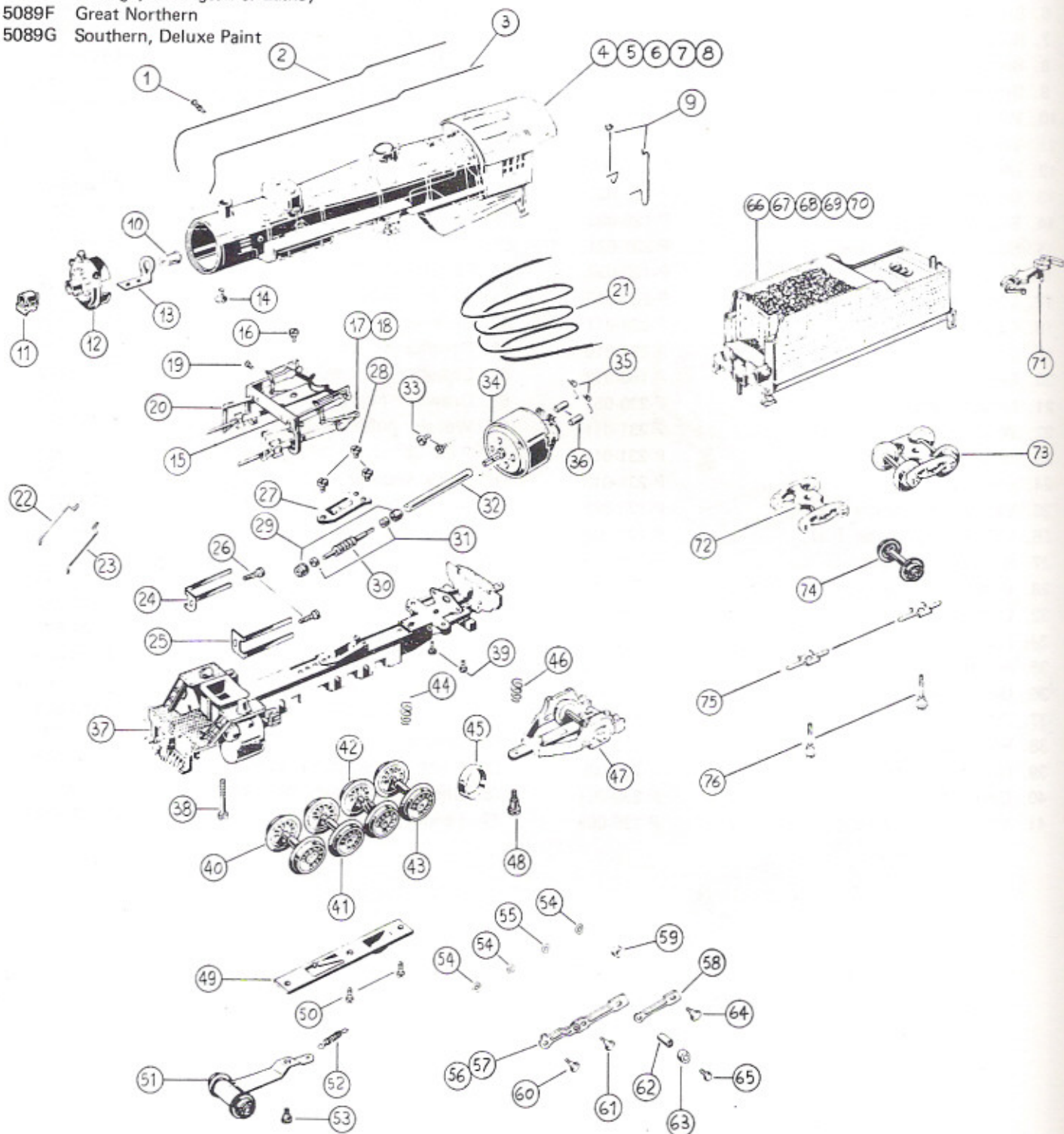


NAME
USRA MIKADO

STOCK NO.
5089

PRODUCTION
1976-77

- 5089B Union Pacific
- 5089C Missouri, Kansas & Texas
- 5089D New York Central
- 5089E Chicago, Burlington & Quincy
- 5089F Great Northern
- 5089G Southern, Deluxe Paint



1. Handrail post	P-120-039	39. Frame screws	P-120-008
2. Handrail R.H.	P-305-012	40. Front driver	P-360-017
3. Handrail L.H.	P-305-013	41. Second driver	P-360-018
4. Body casting C.B. & O.	P-360-001	42. Geared driver	P-360-019
5. Body casting G.N.	P-360-002	43. Rear driver	P-360-020
6. Body casting U.P.	P-360-003	44. Spring for rear driver	P-137-018
7. Body casting N.Y.C.	P-360-004	45. Tire	P-155-032
8. Body casting M.K.T.	P-360-005	46. Trailing truck spring	P-305-023
9. Cab handrails (pair)	P-250-022	47. Trailing truck	P-360-021
10. Bulb	P-137-067	48. Trailing truck screw	P-360-030
11. Headlight housing	P-305-014	49. Cover plate	P-360-022
12. Smoke box cover	P-305-005	50. Cover plate screws	P-127-041
13. Bulb socket	P-265-009	51. Pilot truck	P-360-023
14. Bulb socket screw	P-230-011	52. Pilot truck spring	P-160-041
15. Valve gear hanger	P-360-006	53. Pilot truck screw	P-180-030
16. Valve gear hanger screw	P-127-041	54. Crankpin washers	P-120-010
17. Eccentric rod R.H.	P-360-007	55. Washer for geared driver	P-120-015
18. Eccentric rod L.H.	P-360-008	56. Connecting rod R.H. (front drivers)	P-180-018
19. Eccentric rod screw	P-360-009	57. Connecting rod L.H. (front drivers)	P-180-034
20. Main valve gear	P-360-010	58. Connecting rod (rear drivers)	P-180-019
21. Ultraflex wire	P-120-043	59. Rear spacer	P-126-021
22. Pilot handrail R.H.	P-305-016	60. Crankpin front driver	P-210-057
23. Pilot handrail L.H.	P-305-017	61. Crankpin second driver	P-210-057
24. Valve gear frame R.H.	P-210-045	62. Long spacer	P-120-018
25. Valve gear frame L.H.	P-210-046	63. Short spacer	P-360-029
26. Valve gear frame screws	P-120-008	64. Crankpin rear driver	P-120-046
27. Gear box cover	P-360-011	65. Crankpin geared driver	P-122-017
28. Gear box cover screws	P-127-041	66. Tender body C.B. & O.	P-360-024
29. Brass bearing	P-360-012	67. Tender body G.N.	P-360-025
30. Worm gear	P-360-013	68. Tender body U.P.	P-360-026
31. Metal spacers	P-360-014	69. Tender body N.Y.C.	P-360-027
32. Long plastic joiner	P-360-015	70. Tender body M.K.T.	P-360-028
33. Motor screws	P-120-034	71. Rear coupler	P-125-040
34. Motor	P-231-009	72. Tender truck frame	P-137-035
35. Brush springs	P-120-033	73. Complete tender truck	P-310-025
36. Brushes (pair)	P-120-032	74. Tender truck wheels	P-137-036
37. Underframe	P-360-016	75. Pick-ups	P-310-026
38. Front lower body screw	P-255-022	76. Tender truck screws	P-310-027
77. Body casting Southern		P-360-031	
78. Underframe for Southern loco		P-360-032	
79. Tender body Southern		P-360-033	
80. Smoke box cover for South. loco		P-360-034	
81. Headlight housing for South. loco		P-360-035	

